

## PREVENTING AND DIAGNOSING HEART DISEASE



### DIAGNOSTIC STRATEGY

In the world of Cardiology, Heart Disease Prevention, Diagnosis, and Strategy are all popular topics in recent Trials, Scientific Articles and Major News Journals. Lifestyle identification including diet and activity levels are always the first major identifiers of risk and prevention. If an individual is identified to be at risk for heart disease, or if the patient is worried about possible genetic heart diseases, Electrocardiograph (ECG) technology is always the first strategy in heart disease diagnosis.

The inventing company of the PC-Based ECG is Nasiff Associates, Inc. Having been established in 1989 and their technology in

development for over 30 years, their hardware and software is time efficient and even assistive in a doctor's diagnosis. Even during a heart attack an ECG test is often required to identify what part of the heart is failing before medicine or surgery is administered.

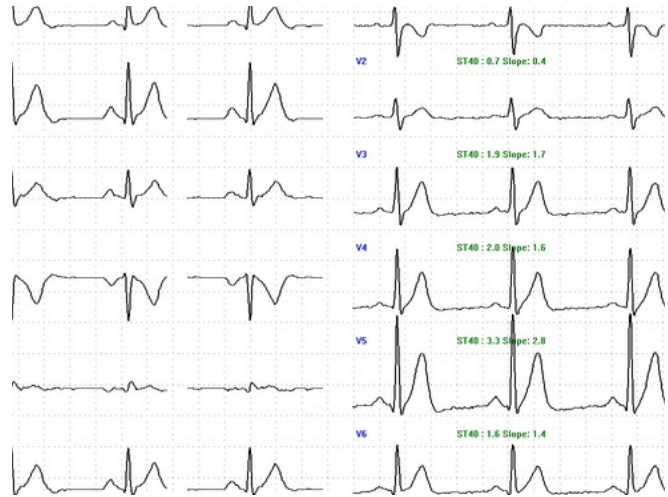
#### **The Visual Identification of Heart Disease**

Electrocardiograph technology is the tech responsible for finding signs of heart disease that is not visually identifiable, though Nasiff ECG technology also works with many ECHO Ultrasound systems that allow doctors to visually inspect a patient's heart for physical damage of the heart muscle or valve systems.

These systems are a major part of the successful strategies practiced by thousands of qualified cardiologists worldwide. These Cardiologists are the Doctors fighting the #1 killer globally, Heart Disease, and it is up to the developers of diagnosing technologies to equip Doctors with tools that are truly useful in saving the lives of those suffering from an often otherwise invisible killer.

### **The Importance of Lifetime Screening**

Signs of Heart Disease can include the swelling of extremities, muscle weakness, water retention and sometimes discoloration of the skin. If you yourself have not been screened for Heart Disease, there are many Accredited Cardiology offices in the United States, Canada, and Globally, that will take new patients, recommended patients from other clinicians and accept Medicare, Medicaid, and Private insurance. Even if paid for out of pocket, it is often more than worth it for many to be screened for heart disease.



### **The Accuracy of Diagnostic Technology**

There are five major classes of interpretive statements that the Nasiff CardioCard Systems detect in their reports: Rhythm, MI, Blockages, Enlargements, Tissue Damage, and Axis Deviations. Some of the most frequent auto diagnoses are: Atrial Fib, Tachycardia, Ischemia, Injury, Blockages, Bundle Branch Blockages, and Myocardial Infarction.

A Cardiologists's own interpretation of all ECG reports is required for a true Diagnosis.

The most used Systems are Resting ECG for efficient heart disease diagnoses, Stress Testing Systems to determine heart performance and expose problems under athletic cardiovascular load, and Wearable Holter ECG Systems to record the Heart and track events for 24-48 Hours.

The Nasiff Cardiology Brand Offers Resting Stress & Holter ECG Systems as well as Blood Pressure and SP02 Vitals Testing and Monitoring Solutions. [www.nasiff.com](http://www.nasiff.com)

Heart disease is still the leading cause of death in the United States. This disease is preventable with the right knowledge, knowledge given by health care professionals. Let's stay United and protect our next generation against this preventable disease that has been hurting us, our country, and the world for generations.

---

*“A Full 12 Lead ECG will show if there are any signs of heart disease, define, and locate it. That information will help you identify the current cardiovascular state of your patient's heart, and affect what diet or exercise program you may recommend to your patient. You will want to monitor your patient's heart alongside any programs you may recommend to your patient over time.” - Roger E. Nasiff Ph.D.*

---



---

## INFORMATION RESOURCES

[ECG DIAGNOSIS IN ELDERLY PATIENT WITH SEVERE SYMPTOMS](#)

[DIAGNOSTIC STRATEGY FOR CORONARY ARTERY DISEASE](#)

[CARDIOLOGY NEWS FROM THE JAMA NETWORK](#)

[NEW FROM NASIFF ARTICLES & RESOURCES](#)

---

